

# State of advancement of operations as at 10

April 10, 2019



**Auplata (Euronext Growth - FR0010397760 - ALAUP)** provides a progress report as at 10 April 2019.

## FRENCH GUIANA

### **Exploration**

**YAOU** - Work continues on the revalidation of resources in Yaou, NI 43-101. A total of 1,795 meters of drilling was defined for the revalidation. These drillings cover the main exploration areas of Yaou. In addition, the areas that had been exploited by Auplata will be the subject of a new topographic survey by drone.

The latest metallogeny research from the Yaou deposit was presented at the Université du Québec in Montréal (UQAM) in Canada on March 26, 2019, during a series of conferences on academic geological research in the Guyanese mining industry.

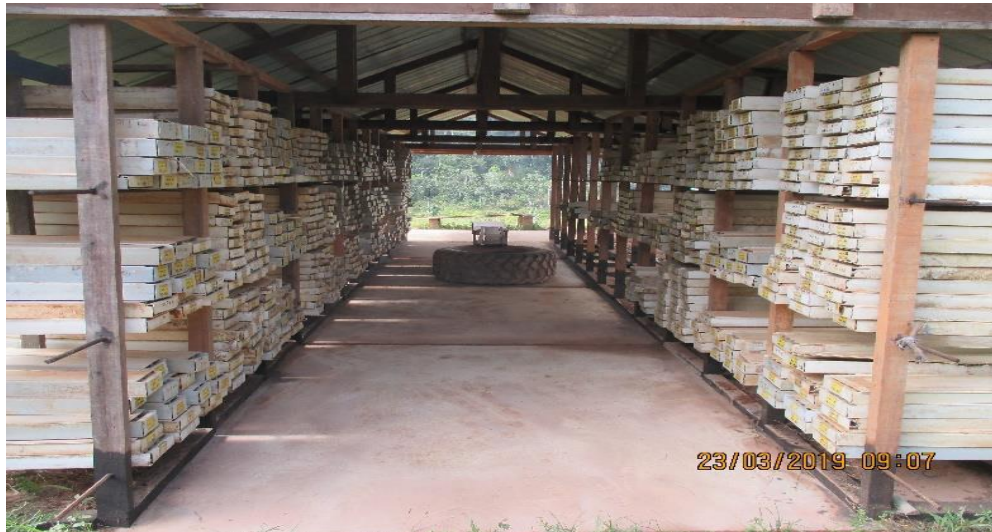
The geologist's team carries out the topographical re-alignment of the boreholes and prepares the resampling of historical boreholes by reconditioning carrot boxes.

The list of validation boreholes has been modified to consider INNOVEXPLO's recommendations:

DLE-ID+A1:W	X RGFG 95	Y RGFG 95	z altoa 2012	LENGTH	ZONE	intervalles minéralisées	remarques	Longueur du forage 2019	Photo de la plateforme
96-069	170584	412375	156,5	225,85	A	157,15 à 213,62: 56,5m@2,52g/t	topo inchangée depuis le levé lidar 2012	230	ok
96-075	170821	412186	121,50	133,50	B	74,4 à 123m: 48,5m@4,71g/t	très remanié, remblai probable	140	ok
94-012	170693	412087	122,80	137,50	B	45 à 61,4m: 16,4m@3,54g/t; 89,2 à 101,2: 12m@1,22g/t; 111 à 113,5m: 2,5m@5,61g/t		135	ok
19-029	170371,5	411980,5	149,50	89,90	BW	45 à 69,5m: 24,5m@3,04g/t	bougé de 2,8m la foreuse dans le sens du forage pour la nille plateforme	90	ok
97-108	165136	408923	pas de levé	151,30	CH	21,00 à 66,9m: 45,9m@1,16g/t et de 66,9 à 151m: 84,1m@0,31g/t		170	ok
96-085	165200	408984	pas de levé	129,60	CH	67,3 à 90,7m: 23,4m@3,16g/t et de 90,7 à 129,6: 38,9m@0,6g/t		150	ok
97-113	170348	412228	124,50	160,50	CL	20,6 à 43,5m: 22,9m @0,95; 62,4 à 88,6m: 26,2m@0,78g/t; 95,95 à 106,3m: 10,35m@0,85g/t; 111,15 à 129,1m: 17,95m@1,46g/t; 137,5 à 151,5m: 14,05m@1,67g/t	vieux chemin à moins de 10m, arbre de 35cm de diamètre pas loin, forêt primaire à 15m, bon choix	170	ok
C-022	170548	412233	147,00	139,00	CL	85 à 138m;53m@4,05g/t	pas retrouvé la plateforme mais zone peu perturbé, vieille forêt secondaire	160	ok
C-029	170188	412073	146,00	99,00	CL	38 à 65m : 27m@1,69g/t	à visiter sur le terrain	90	ok
C-069	169181	411107	120,50	163,00	H	36,5 à 45m: 8,5m@1,03g/t et 70 à 90m: 20m@0,49g/t	à visiter sur le terrain	110	ok
95-050	172050	413223	215,80	190,50	JN	151,3 à 170,3m: 19m@3,7g/t	pvc encore sur la plateforme	190	ok
95-052	172194	413224	217,60	166,50	JN	121,5 à 142,3m: 20,8m@2,9g/t	pvc encore sur la plateforme, non arpenté par Guyanor	160	ok
							métrage total	1795	



**DIEU MERCI** – Auplata stored the carrot boxes in the core library. Geological surveys of structures S0-1 and S2 and veins of the Caesar and K rouani pits were carried out by the geology team.



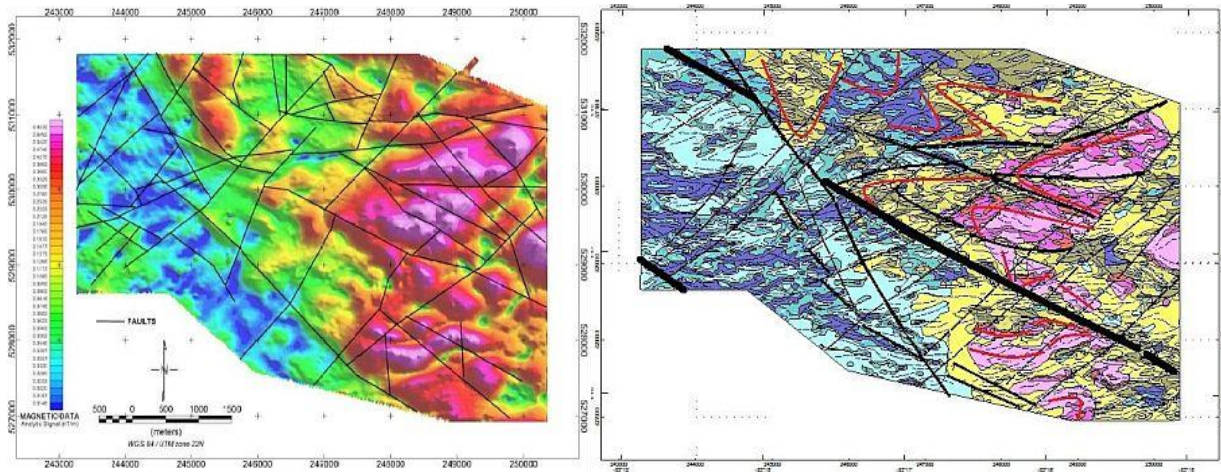
The Canadian geological survey firm BMA-G o-Conseil is continuing the work of interpreting and reprocessing the 2010 Geotech geophysical surveys using historical data. The database will be ready in May 2019.

The pit area is affected by two major shear zones joining to the southeast. The formations are folded into anticlines and synclines (pinched) with a southern dip and flooding to the west. To the northwest the structures take on a meridian orientation. A "Mag-IP" ground geophysical campaign will be used to identify the anomalies that will then be probed.



Géotech 2010

BMA 2019



## Operation

**DIEU MERCI** - The Géo+ design office returned to Auplata the elements expected by the French administration for the plant's operational launch. Work is ongoing, pending the arrival of the elution unit, currently in the transport stage between Peru and Guyana.

## Finance, administration and human resources

The "Health, Safety and Environment" training courses for the team in charge of managing the plant will be held between April and May 2019.

## Permits and licenses

**DORLIN** - The application for the renewal of the Dorlin permit is in progress and will be submitted to the Departmental Mining Commission (CDM) in April.

**YAOU** - The application for a concession on Yaou is in progress. A Declaration of the Opening of Mining Works (DOTM) for parallel drilling (NI 43-101) is being drafted.

## Rehabilitation, environment and social

Concerning the rehabilitation program on Paul Isnard, to this day, 8 hectares out of the 10 planned have been rehabilitated, in accordance with the objectives.



## PERU

### **Exploration**

**EL SANTO** - INNOVEXPLO, one of the companies qualified to prepare the NI 43-101 resource estimate in Canada, has submitted a preliminary version of the Condoroma project report and is preparing the preliminary version of the El Santo report. The NI 43-101 technical report is expected in mid-April. Work has been carried out to identify the areas containing the best concentrations of the El Diablo and Angel veins in order to replace them.

**SUYCKUTAMBO** – A mapping work and validation of the information was carried out. Sampling was done at underground mine levels -40 and -80 with the aim of obtaining metallurgical and mineralogical information.

The Guyanese team is in contact with the Peruvian team for a topographic survey mission using a drone at the Suyckutambo and San Miguel sites in Peru.

### **Operation**

**EL SANTO** – A stock of low and medium grade ore has been established for blending operations. The moisture percentage of lead concentrate has been significantly improved. It is currently less than 8%.

### **Finance, administration and human resources**

Mr. Fernando Valdez Nolasco (mining engineer) has been appointed Regional Director for Peru. The implementation of an integrated management software package (ERP) and/or exploration software to consolidate the operational and financial information of all Group companies is under study.

### **Permits and licenses**

**EL SANTO, SUYCKUTAMBO and TARUCAMARCA** – The preparation of a feasibility study (maps, environmental information, list of new components) for the third technical report, including the construction of new platforms and the increase in the capacity of the processing plant from 300 to 360 tons per day, is being carried out.

A presentation to the Ministry of Energy and Mines of the new plan for the closure of mining activities was made.

A request for authorization has been submitted for the construction of the power line connecting El Santo to the Peruvian national power grid.

**SAN MIGUEL** – An archaeological study on a section of the permit is underway to determine the presence or absence of archaeological remains.



## **Rehabilitation, environment, social and community**

A first meeting was held with the MICHIHUASI Foundation, representing the communities, to establish the terms of the agreement that will allow BGPP to carry out mining activities in the Sandra 104 mining permit.

The new Regional Director was introduced to the communities in order to establish the groundwork for collaboration.

## **Auplata in brief**

Auplata, founded in July 2004, listed on Euronext Growth (Paris) since December 2006, is a polymetallic mining exploration and exploitation group. Auplata is present in French Guiana and through its subsidiaries in Peru, Morocco, (listed in the Casablanca stock market) and in the Ivory Coast. Auplata pursues a dynamic, sustainable and innovative industrial and financial strategy dedicated to the enhancement of high-potential precious and base metal deposits with a decisive involvement of local stakeholders. The company's objective is to produce the metals of tomorrow, needed for the energy transition in a clean and responsible way while trying to provide France with a national source of supplies of strategic metals. ISIN: FR0010397760 – ALAUP – ICB: 1777 - Gold Mining.

For more information about Auplata: [www.auplata.fr](http://www.auplata.fr).

## **Contacts**

### **ACTUS FINANCE**

Mathieu Omnes  
Nicolas Bouchez

Investors Relations Department  
Press relations Department

[momnes@actus.fr](mailto:momnes@actus.fr)  
[nbouchez@actus.fr](mailto:nbouchez@actus.fr)

01 53 67 36 92  
01 53 67 36 74